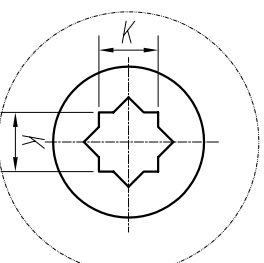
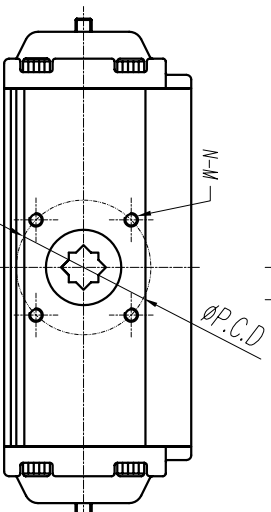
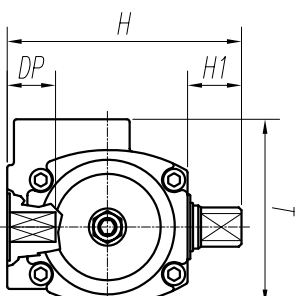
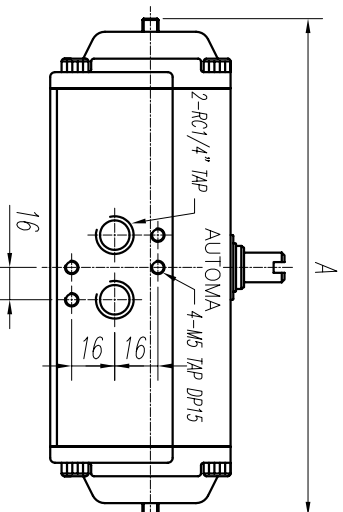
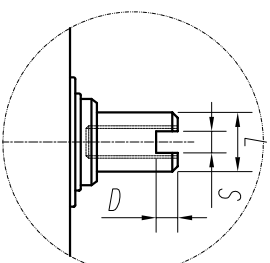
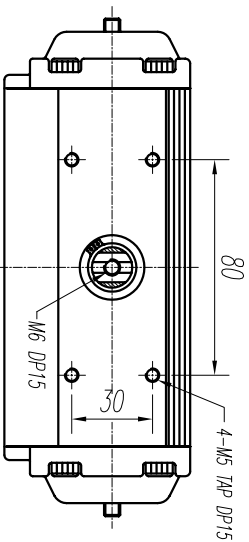


1-1

FOR APPROVAL



DIMENSION(mm)

BOTTOM VIEW-ISO-5211

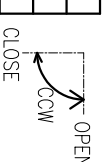
VALVE		MODEL	A	T	L	S	D	N-M	P.C.D(φ)	H1	H	K	DP
BAUVE	BUTTERFLY												
—	—	AD40	108	60	10	4	4	M5	36	20	74	9X9	12
15A-25A	40A-65A	AD50	178	69	13	4	4	M6	50	20	87	11X11	16
32A-50A	80A-100A	AD65	232	82	13	4	4	M6/M8	50/70	20	106	14X14	17
65A-80A	125A-150A	AD80	260	98	13	4	4	M8	70	20	123	17X17	22
100A	200A	AD100	326	114	22	4	4	M8/M10	70/102	20	143	22X22	28
125A	250A~300A	AD125	435	130	22	4	4	M8/M10	70/102	20	170	22X22	28
150A	350A	AD140	462	158	22	4	4	M10/M12	102/125	20	180	27X27	35

TITLE  
DOUBLE ACTING  
ACTUATOR

NO	DESCRIPTION	MATERIAL
1	BODY	AL6063
2	PISTON	ADC12
3	COVER	ADC12
4	SHAFT	SM45C
5	BOTTOM O-RING	NBR
6	BOTTOM RING	PTFE
7	PISTON O-RING	NBR
8	PISTON GUIDE RING	PTFE
9	PISTON GUIDE PAD	PBT
10	SHAFT GUIDE RING	PTFE
11	TOP O-RING	NBR
12	TOP GUIDE RING	PTFE
13	THRUST WASHER	PTFE
14	SNAP RING	SM45C
15	COVER O-RING	NBR
16	COVER BOLT	304SS
17	ADJUST O-RING	NBR
18	ADJUST WASHER	304SS
19	ADJUST O-RING	304SS
20	ADJUST NUT	304SS

ROTATING ANGLE

✓	100% OPEN&CLOSE
	50% CLOSE
	50% OPEN

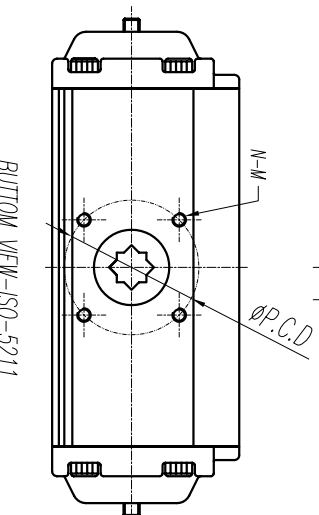
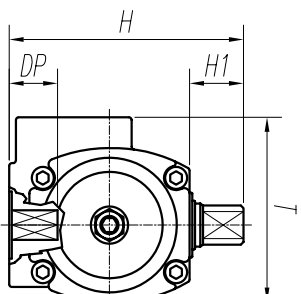
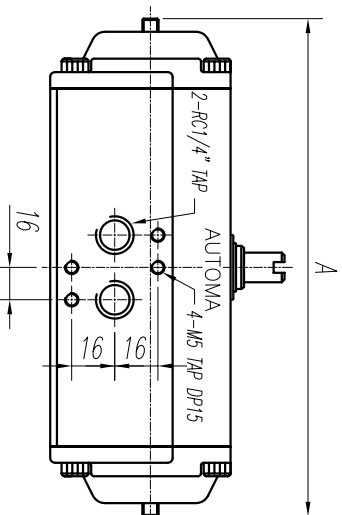
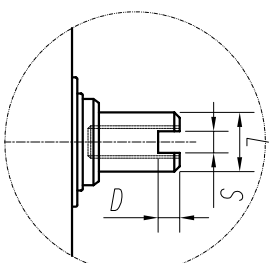
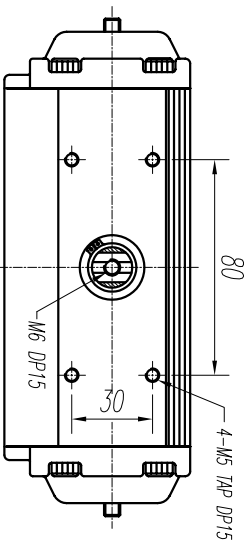


Actuator Specification

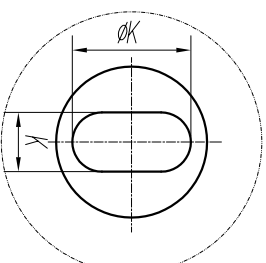
Specification	Type	DOUBLE ACTING
Operating Medium		Compressed dry air
Standard operating pressure		5kg/cm <sup>2</sup>
Operating pressure range		4 ~ 7kg/cm <sup>2</sup>
Operating angle		90° (0°~+5°)
Operating time (close → open)		Maximum 30 Second / Speed controller
Service temperature		-20°C ~ +65°C (Option : 250°)
Operating Type		Socket - Yoke (AD40 / R&P)
Designed by	Checked by	Approved by
장원철		
File name	Date	Scale
AD	2005.02.05	N:S
Title		Unit
AD40 ~ AD140		mm
Model		Drawing no.
AD-PNEUMATIC-ACTUATOR		A050202-01-01

1-2

FOR APPROVAL



BOTTOM VIEW-ISO-5211

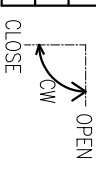


TITLE  
DOUBLE ACTING  
ACTUATOR

NO	DESCRIPTION	MATERIAL
1	BODY	AL6063
2	PISTON	ADC12
3	COVER	ADC12
4	SHAFT	SM45C
5	BOTTOM O-RING	NBR
6	BOTTOM RING	PTFE
7	PISTON O-RING	NBR
8	PISTON GUIDE RING	PTFE
9	PISTON GUIDE PAD	PBT
10	SHAFT GUIDE RING	PTFE
11	TOP O-RING	NBR
12	TOP GUIDE RING	PTFE
13	THRUST WASHER	PTFE
14	SNAP RING	SM45C
15	COVER O-RING	NBR
16	COVER BOLT	304SS
17	ADJUST O-RING	NBR
18	ADJUST WASHER	304SS
19	ADJUST O-RING	304SS
20	ADJUST NUT	304SS

■ ROTATING ANGLE

✓	100% OPEN&CLOSE
	50% CLOSE
	50% OPEN



■ DIMENSION(mm)

VALVE	MODEL	A	T	L	S	D	N-M	P.C.D(φ)	H1	H	ØK - k	DP
BAVE	BUTTERFLY											
15A-25A	40A-65A	AD50	178	69	13	4	M6	50	20	87	Ø14-9.7	13
32A-50A	80A-100A	AD65	232	82	13	4	M6/M8	50/70	20	106	Ø16.5-9.7/11.7	17
65A-80A	125A-150A	AD80	260	98	13	4	M8	70	20	123	Ø19.5-14.7	22
100A	200A	AD100	326	114	22	4	M8/M10	70/102	20	143	Ø22-17.7/19.7	28
125A	250A~300A	AD125	435	130	22	4	M8/M10	70/102	20	170	Ø22 x 22	28
150A	350A	AD140	462	158	22	4	M10/M12	102/125	20	180	Ø27 x 27	35

Specification

Type

DOUBLE ACTING

■ Actuator Specification

Operating Medium	Compressed dry air					
Standard operating pressure	5kg/cm <sup>2</sup>					
Operating pressure range	4 ~ 7kg/cm <sup>2</sup>					
Operating angle	90° (0°~+5°)					
Operating time (close → open)	Maximum 30 Second / Speed controller					
Service temperature	-20°C ~ +65°C (Option : 250°)					
Operating Type	Switch - Yoke (AD40 / R&P)					
Designed by	Checked by	Approved by	File name	Date	Scale	Unit
정현철			AD	2005.02.05	N:S	mm



Title  
AD50 ~ AD140(BUTTERFLY VALVE)  
Model  
AD-PNEUMATIC-ACTUATOR  
Drawing no.  
A050202-01-02