

SPECIFICATION

- * Body & end caps quality investment casting *
- Available in stainless steel or carbon steel *
- with ISO 5211 direct mounting pad
- * Adjustable stem packing
- * Blow-out proof stem design
- * Available in L/ T/ X/ I-port
- * Available in 3/ 4-way in block body type.
- * with Cavity filler
- * 100% air tested under water at 80-100 psi
- * Temperature range -20 F to 450°F
- * End type: T-Clamp, Tube Weld, Extended Tube Weld *
- with locking function

OPTIONS

- * CF3M (SS316L)
- * Automation application
- * PTFE/ PFA coating (40-70 um)
- * TFM1600/ UPE (UHMWP) soft kits
- * non-Cavity filler
- * 180 degree operation stop plate
- * Port polish according to customer's requirement
- * ASME/ BPE STANDARD (for SS316L)
- low ferrite ($\leq 3\%$)
- low sulphur (0.005% to 0.017%)

SERIES 525-SN 3/4-WAY SANITARY BALL VALVE



VALTORC'S 525 is a multi-way sanitary ball valve with ISO direct mounts, a smart way to save on the cost of sanitary pipe lines and space. With T/L/X/I-ports, a 3/4-way block body type, the 525SN will be easy to use for any custom application. The 525 is designed with ISO direct mount for assembling the actuator directly.

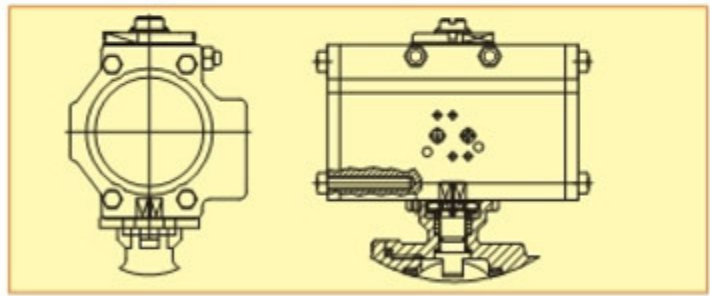
The 525 designed with cavity filler which will fill the body cavity over 95%, especially for sanitary applications to keep the media from remaining in the cavity and cleanses easily. Non-cavity filler is another option for your special use. The cavity is only for the valve interior with machining.

The 525SN valve is 4 seat design, this will help to keep the ball position stable. Our valves are designed with an insert pin between the stem & ball to make sure the ball will not lean after hundreds of operations. This will protect the actuator to keep from being damaged by the media. This is a good way to keep the working temperature lower; which will also help to increase the life time of actuators.

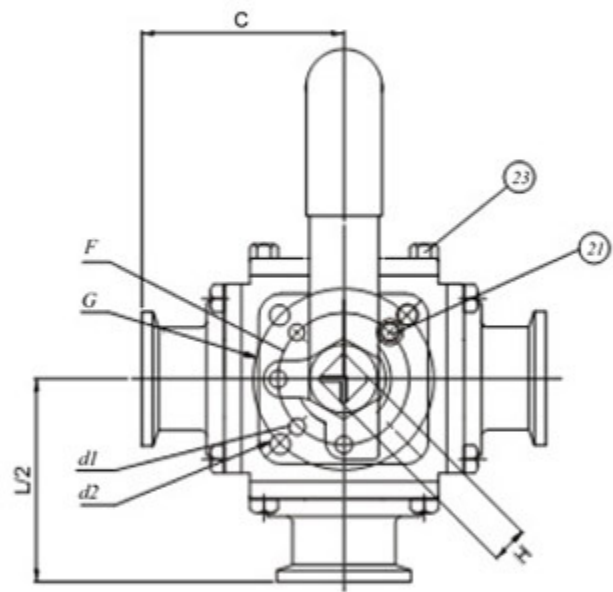
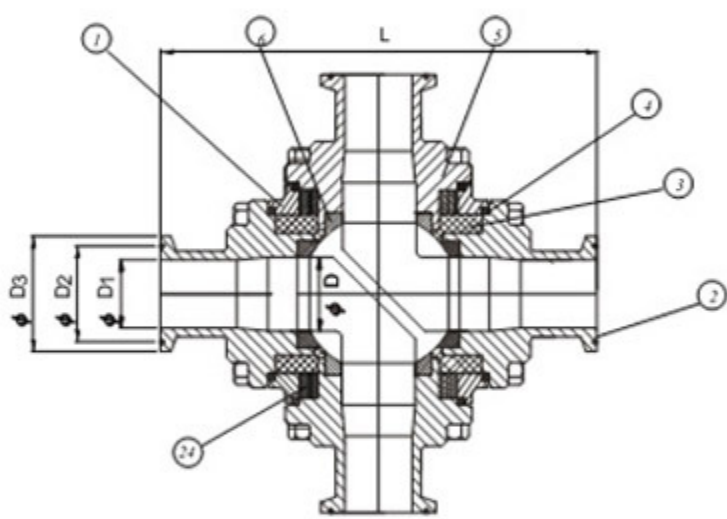
End caps can be T-Clamp or a tube welded end (or extended tube welded ends) types for normal sanitary pipe connections.

The 525SN soft kits, pure PTFE/ TFM1600/ UPE (UHMWPE) are available for various applications.

Valves with PTFE/ PFA coating are available when required. Please contact VALTORC for availability.

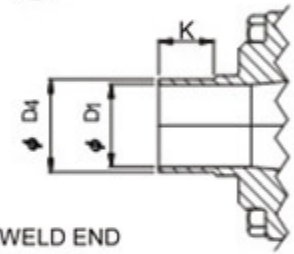
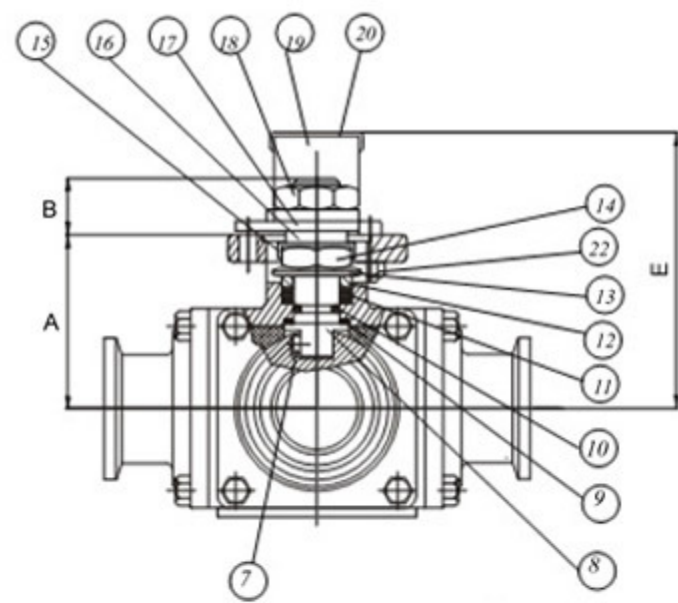


- * Pneumatic (DA orSR)/ Electric actuator
- * Solenoid valve/ Limit Switch Box/ EP



MATERIALS LIST, 1/2" to 2"

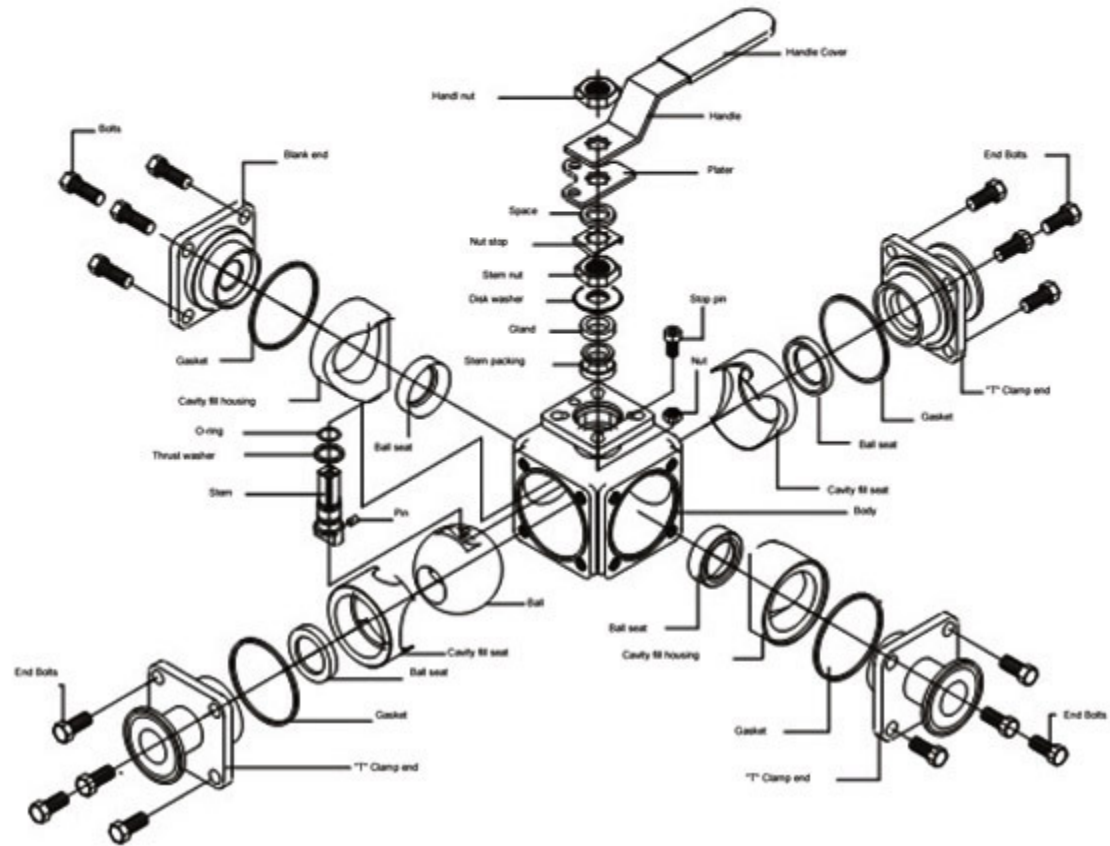
ITEM	PART NAME	MATERIALS
1	BODY	CF8M/ CF3M
2	T-CLAMP END	CF8M/ CF3M
3	CAVITY FILLER	PTFE
4	GASKET	PTFE
5	BLANK CAP	CF8M/ CF3M
6	SEAT	PTFE
7	INSERT PIN	SS 316
8	STEM	SS 316/ SS316L
9	THRUST WASHER	RPTFE
10	O-RING	VITON
11	STEM PACKING	PTFE
12	GLAND	SS 304
13	DISK WASHER	SS 301
14	STEM NUT	SS 304
15	NUT STOP	SS 304
16	SPACE WASHER	SS 304
17	STOPPER PLATE	SS 304
18	HANDLE NUT	SS 304
19	HANDLE	SS 304
20	SLEEVE	PLASTIC
21	STOP PIN	SS 304
22	STOP PIN NUT	SS 304
23	BOLTS	SS 304
24	FILLER HOUSING	SS 304



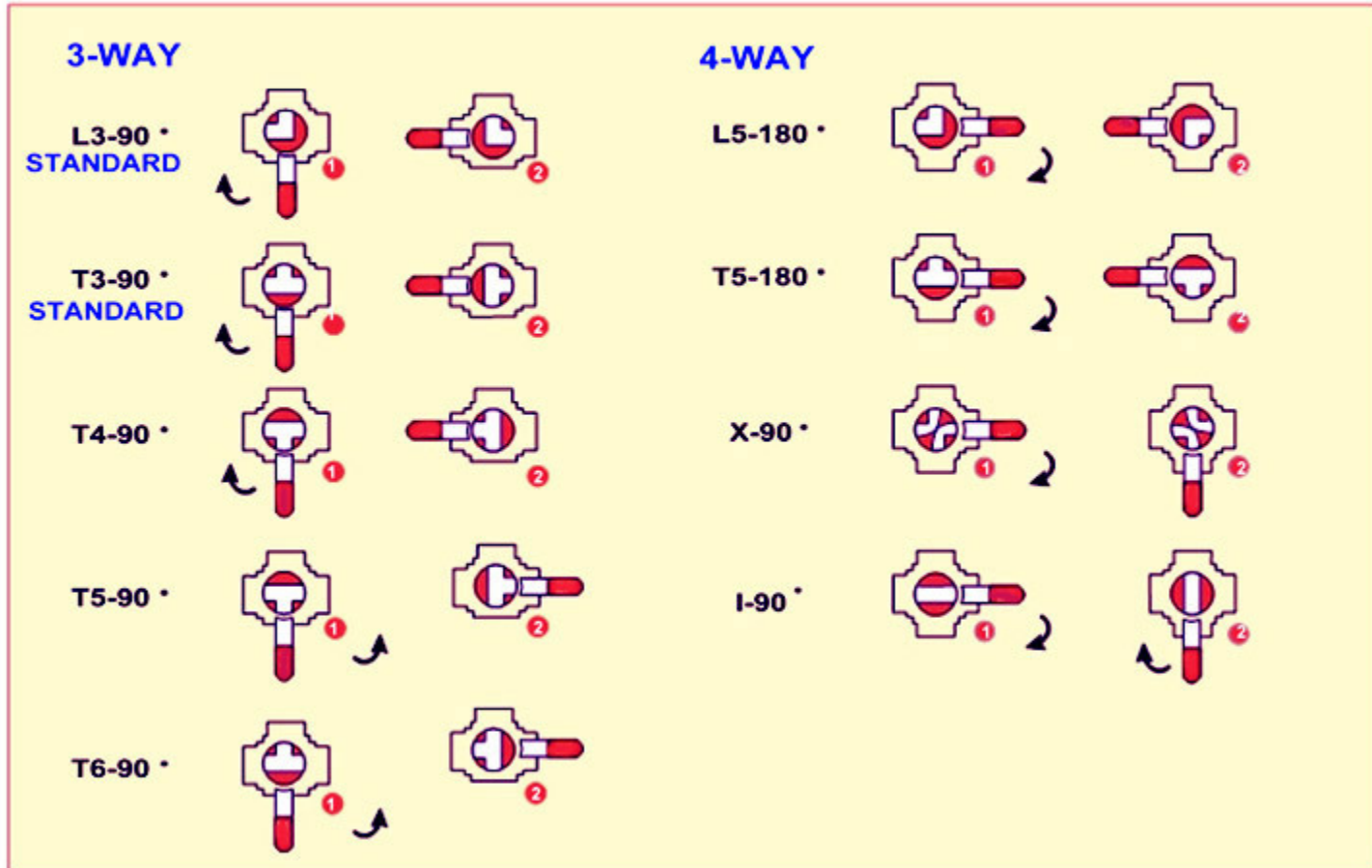
TUBE WELD END

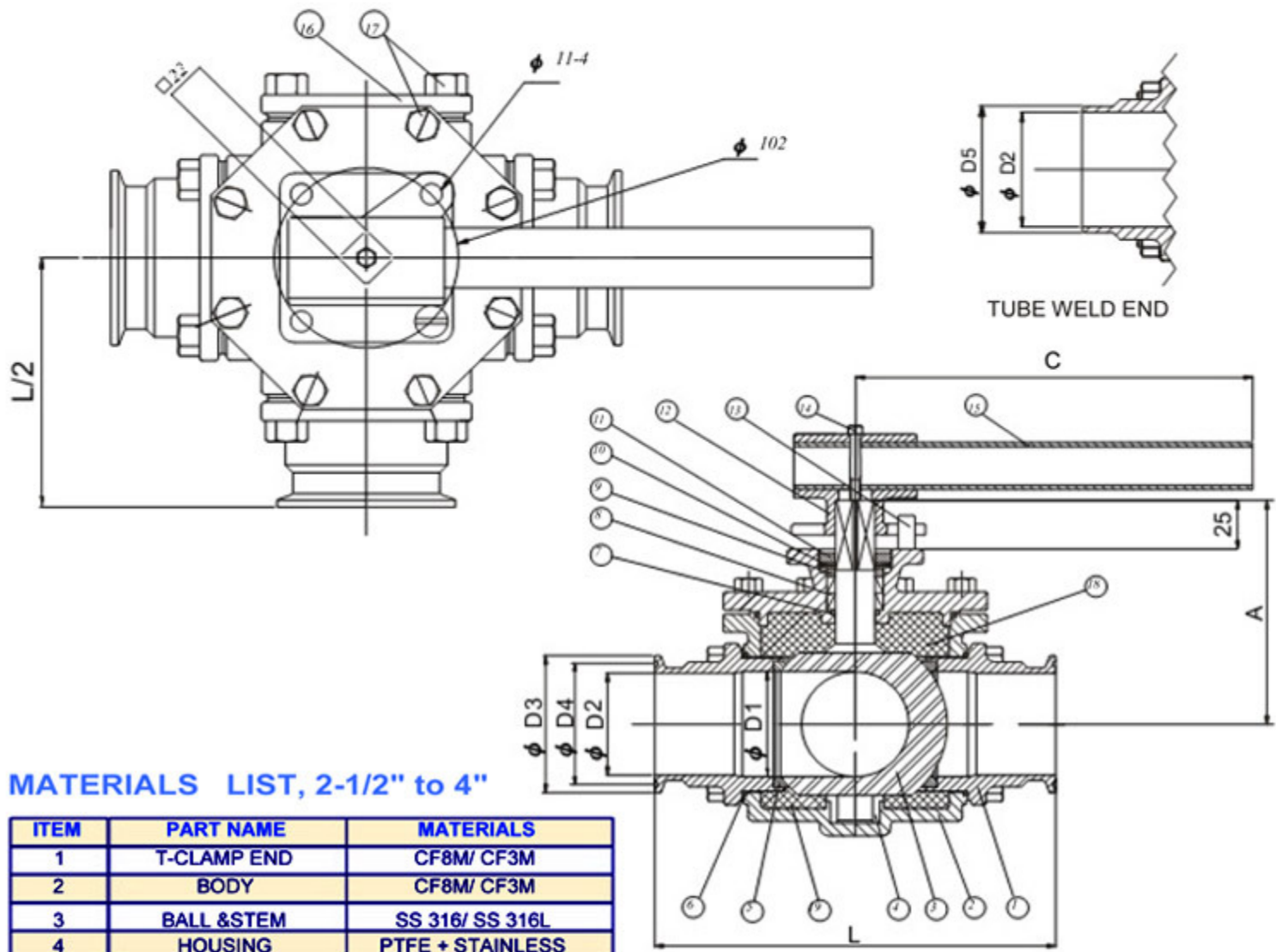
DIMENSIONS, 1/2" to 2" (mm)

SIZE	A	B	C	d1	d2	E	F	G	H	L/2	L	D	D1	D2	D3	D4	K	3-Way W(kg)
1/2"	37.5	9.5	130	6.0	6.0	62	36	42	9	60	120	12	9.6	21.7	25	12.7	15	1.36
3/4"	42	11	130	6.0	6.0	64	36	42	9	68	136	15	15.8	21.7	25	19.05	20	2.68
1"	55	14	165	6.0	7.1	89	42	50	11	80	160	25	22.1	43.5	50.4	25.4	20	4.37
1 1/2"	74	16	205	7.1	9.2	108	50	70	14	91	182	38	34.8	43.5	50.4	38.1	20	8.58
2"	93	21	325	9.2	11.4	140	70	102	17	108	216	50	47.5	56.5	63.9	50.8	20	15.33



FLOW PATTERN

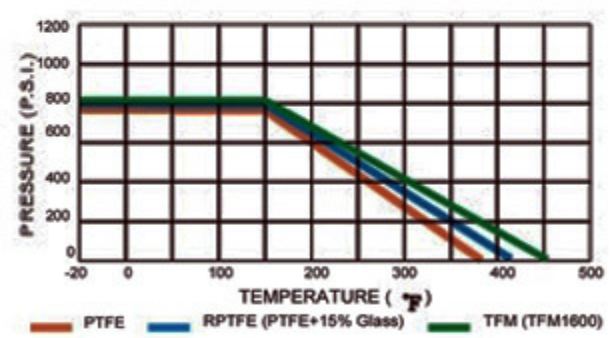




MATERIALS LIST, 2-1/2" to 4"

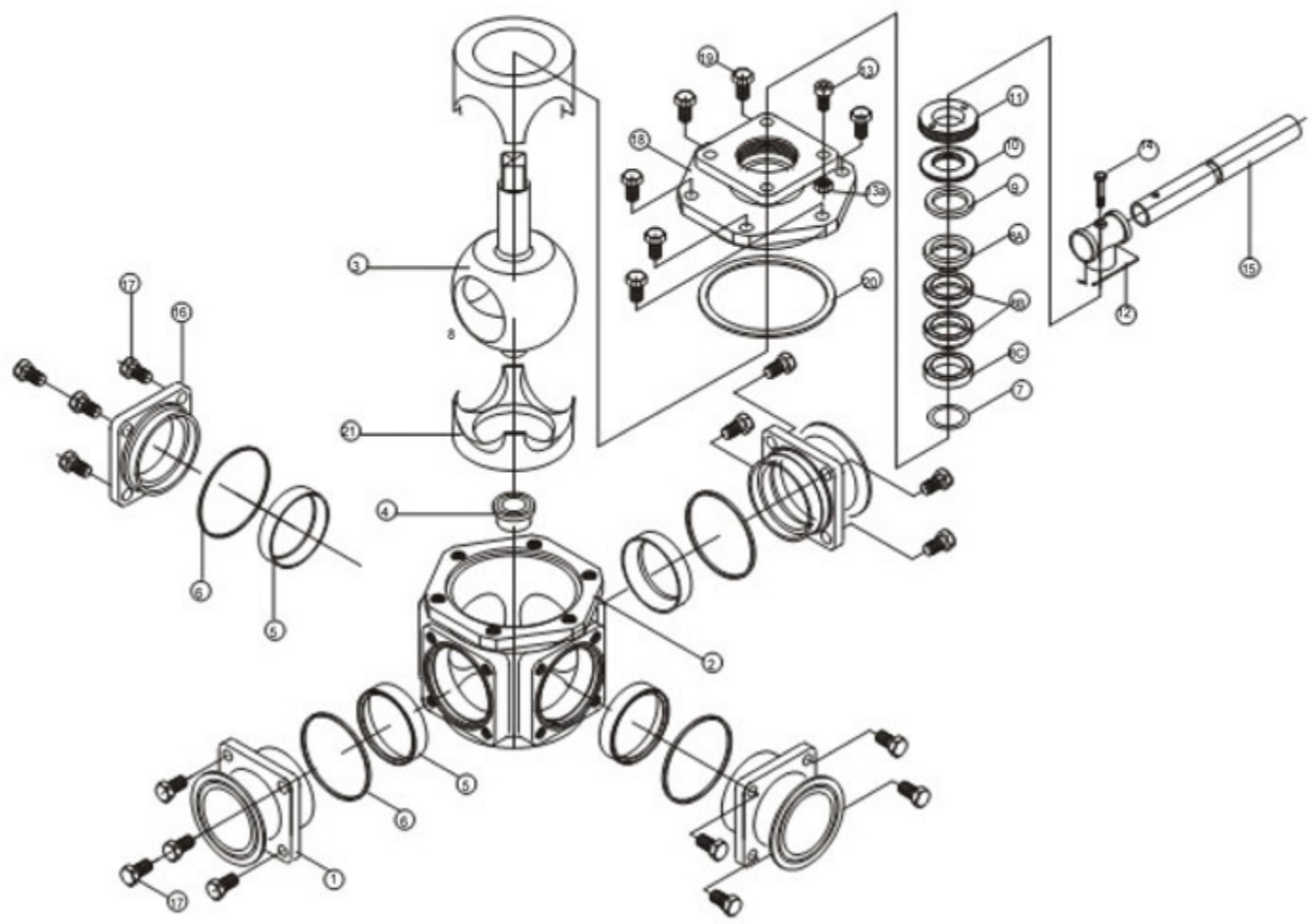
ITEM	PART NAME	MATERIALS
1	T-CLAMP END	CF8M/ CF3M
2	BODY	CF8M/ CF3M
3	BALL & STEM	SS 316/ SS 316L
4	HOUSING	PTFE + STAINLESS
5	SEATS	PTFE
6	GASKET	PTFE
7	O-RING	VITON
8	STEM PACKING	PTFE
9	GLAND WASHER	SS 304
10	DISK WASHER	SS 301
11	GLAND	SS 304
12	HANDLE HEAD	Cf8
13	STOP PIN	SS 304
14	SET BOLT	SS 304
15	HANDLE	STEEL PIPE
16	BLANK CAP	CF8M/ CF3M
17	BOLT	SS 304
18	CAVITY FILLER (A)	SS 304
19	CAVITY FILLER (B)	SS 304

PRESSURE/ TEMPERATURE



DIMENSIONS, 2-1/2" to 4" (mm)

SIZE	A	C	D1	D2	D3	D4	D5	L	L/2	3-Way W(kg)
2-1/2"	144	400	62	60.2	77.4	70.5	63.5	241.3	120.65	20.25
3"	162	500	76	72.9	91	83.2	76.2	279.4	139.7	26.36
4"	182	650	96	97.4	119	110.4	101.6	330.2	165.1	47.63



BREAK-TORQUE VALUE (Nm)

SIZE	1/2"	3/4"	1"	1-1/2"	2"	2-1/2"	3"	4"
NON-GREASE	18.48	19.2	44.64	73.92	115.44	261.6	300.12	384.84