

## SERIES 830 SOLENOID VALVE

- **Stainless Steel Body**  
**Type 316**
- **2-Way Piloted Diaphragm**
- **Normally Closed**



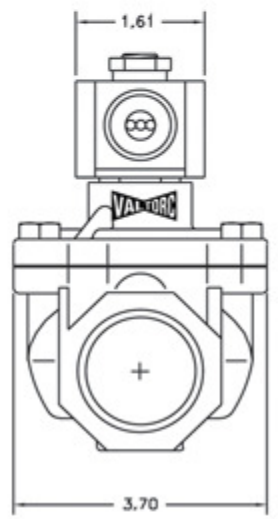
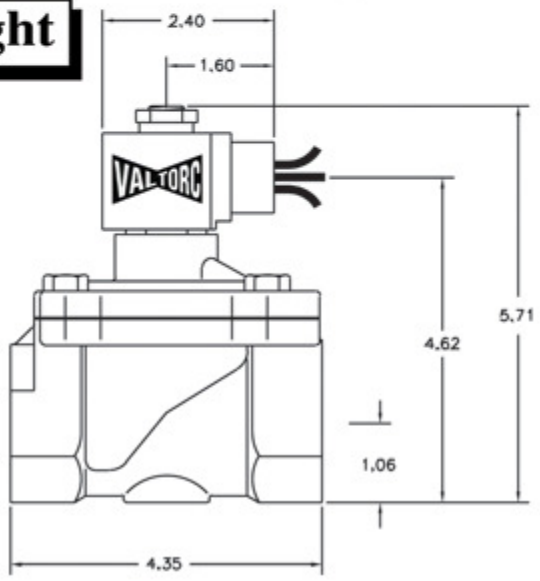
Materials	Seals:	Nitrile, Viton®, Ethylene Propylene
	Orifice: Pilot Main	Stainless Steel Stainless Steel Ø 1 1/4"
Electrical	Standard Housing:	Encapsulated Waterproof Conduit (NEMA 4/4X)
	Optional Housings:	Metallic Conduit, Explosion-proof (NEMA 7), Grommet, Open Frame, Junction Box (single or dual knockouts),
	Standard Voltages:	24, 120, 240 AC 60 Hz; 50 Hz available 6, 12, 24 DC;
	Voltage Tolerance:	±10% of applicable voltage
	Coil Classes:	F, H, N
	Standard Lead Length:	24 inch
Operating Temperature	Ambient (Nominal):	32°F to 125°F
Mounting	Position:	Any
Approvals*	Agency:	UL Listed, UL Recognized, CSA Approved

\* Not available for all variations

® Registered Trademark of DuPont Co.

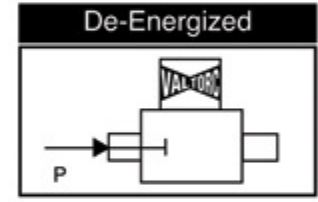
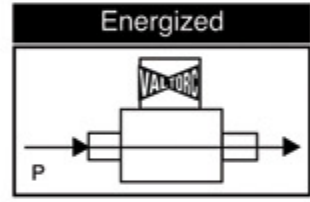
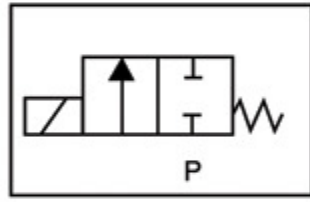
### Dimensions/Weight

**Weight (lbs.)**  
 10.5



## Valve Selection List

Normally Closed



Pipe Size NPT	Orifice Size IN	Cv	Operating Pressure Differential (psi)								Max Fluid Temp. °F	Seal Material	Power Consumption (Watts)		Model Code ( 120V/60HZ – 110V/50HZ ) Shown	
			Maximum										AC	DC		
			Air/Gas		Water		Light Oil		Steam*							
			AC	DC	AC	DC	AC	DC	AC	DC			AC	DC		
1 1/4	1 1/4	19	10	200	150	150	150	–	–	–	–	295	EPR	8	9	Stainless Steel Body Type 316
	1 1/4	19	5	200	150	150	150	85	85	–	–	180	Nitrile	8	9	
	1 1/4	19	10	200	150	150	150	85	85	–	–	230	Viton	8	9	
	1 1/4	19	5	–	–	–	–	–	–	50*	50*	295	EPR	8	9	

\* Class H Coil Recommended for Steam and Other High Temperature Applications

## Coil Data



Frequency (Hz)		60	50
Nominal Power (VA)	Inrush	36	36
	Holding	13	14